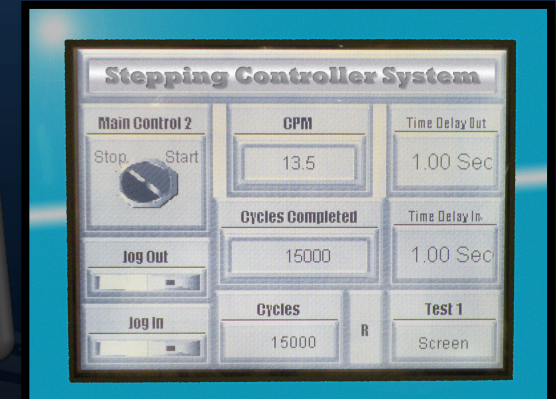
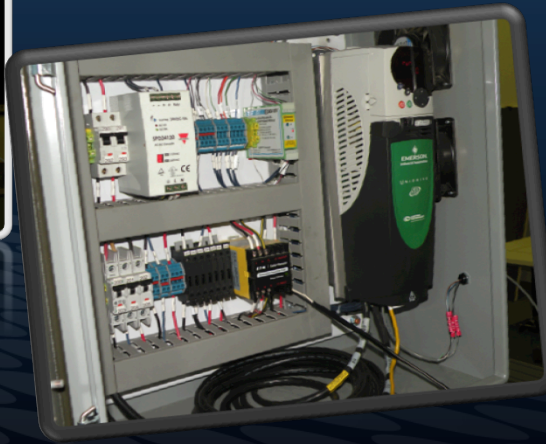


Electrical Power and Amplifier Panel

20" x 20" x 12" electrical enclosure NEMA 12 rated.



Special Applications to meet your needs

Business Development Planners sells this equipment for use as a complete assembly that includes actuator, electrical panel, electronics, and cabling.

Customers must be capable to mount, wire, program and interface with this device. If needed, Business Development Planners can provide a specialist with equipment integration. This company, InnoDAQ can provide a complete system to your requirements. InnoDAQ provides

LabView programming, system hardware and mechanicals to perform your testing needs. Call today to get your program started.

Business Development Planners is an equipment and consulting

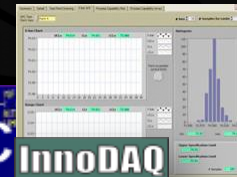
company for both laboratories and manufacturing organizations. To Check on how this system can be designed to your testing or manufacturing needs please call or email us.

Phone: 1-723-231-1932

Email: sales@busdevplanners.com

Electrical Items

- This system operates optimally at 200-250 VAC 60 HZ three phase power
- 20" x 20" x 12" electrical enclosure NEMA 12 rated
- 15 foot cables connect the electrical enclosure to the actuator. Longer cables available



Mechanical Actuator and Electronics

- 6 to 15 inches of stroke to accommodate many different situations. Positioning accuracy: ± 0.010 "
- 750 lb dynamic load capacity; with the optional load cell feedback. Actuator is capable of loading to an accuracy of $\pm 2\%$ (5lbs max inaccuracy)
- The maximum speed of this actuator is 13 inches per second (standard)
- Built-in limit switches for end-of-travel limits and homing actuator
- 3" x 3" extruded aluminum extension rod can take large side loads
- Position, speed, acceleration and load is controlled via Modbus TCP/IP Ethernet interface at the control panel



Laboratory Cyclic Testing

This actuator was specifically designed for cyclic durability testing for the automotive, medical, furniture, commercial and aviation industries. Eliminate messy hydraulics and low performance issues with air systems.

An Ethernet network cable is all that is needed to link this unit to your control equipment. The communication protocol is Modbus TCP/IP. This actuator may be used as a "plug and play" sub-assembly in test machines or other types of industrial equipment.



IMMEDIATE CONFIGURATION

Everything is prepared to be bolted into place. All 8020 housed for a multitude of applications and configurations.

Optional Items

- Load control - with load cell
- High speed option at 30" per second to 500 lb load. Oil filled UHMW polyethylene linear bearings.
- Optional Dynamic Controller

BUSINESS DEVELOPMENT PLANNERS

Pinckney, MI 48169
734-231-1932

WWW.BusDevPlanners.com

Contact us for Pricing
734-231-1932

Sales.BusDevPlanners.com